

*CC
du C*

A PRIVATE GOLFING ESTATE



CHÂTEAU DU COUDRECEAU.

Sitting quietly within the picturesque Loire Valley landscape, generations of discerning guests have retreated to Château du Coudreceau since it was first built in 1775 during the reign of Louis XVI, the last King of France.

The Château and its grounds were developed by Francois Seurrat du Colombier, a wealthy merchant from the City of Orléans to undertake bee keeping and silk worm cultivation. The heritage remains firmly embedded within the estate with many of the trees still standing from their original plantation, having seen many fortunes, generations and grand occasions.

In 2013, the Williams family undertook a full renovation of the Château with a world-class golf course meticulously crafted, intertwining through the vast woods. Where possible, the Château's original historical features have been retained, blending classic French 18th century design with luxurious modern amenities, ensuring your stay is one of ultimate comfort, ease and serenity.

Along with the addition of the exclusive golf course, a nearby private executive airport and round the clock staff service, Château du Coudreceau welcomes you to a luxury escape, steeped in a rich culture of French joie de vivre.





A GOLFING KINGDOM.

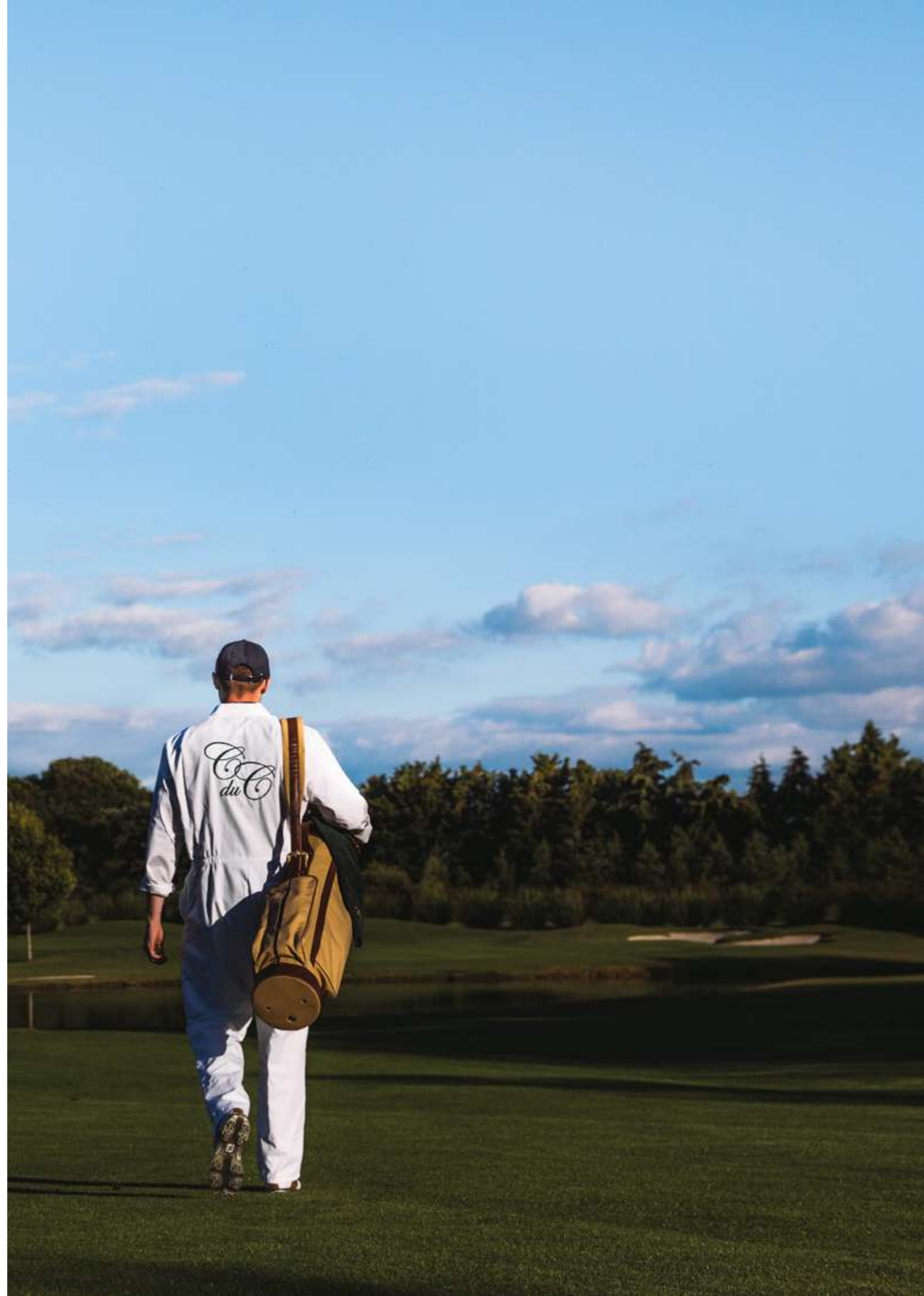
No members, no tee times and no restrictions; only the freedom to express your game along with access to caddies, buggies and golfing instruction by appointment. Simply put, this is your own private golf course during your stay at Château du Coudreceau.



A PRIVATE GOLFING ESTATE.

Experience the world-class championship quality golf course nestled within the grounds of the Château. Carved through the mature woodland and designed by Mr Williams and his son with consultation and guidance from Hawtree Designs, The Arnold Palmer Design Company and Paul McGinley Designs, each hole is perfectly crafted around the rich landscape.

With water coming into play on 9 of the holes, the golf course allows you to experience the perfect mix of risk and reward without interruption or distraction; providing a firm but fair challenge to golfers of all abilities.









CHÂTEAU SECLUSION.

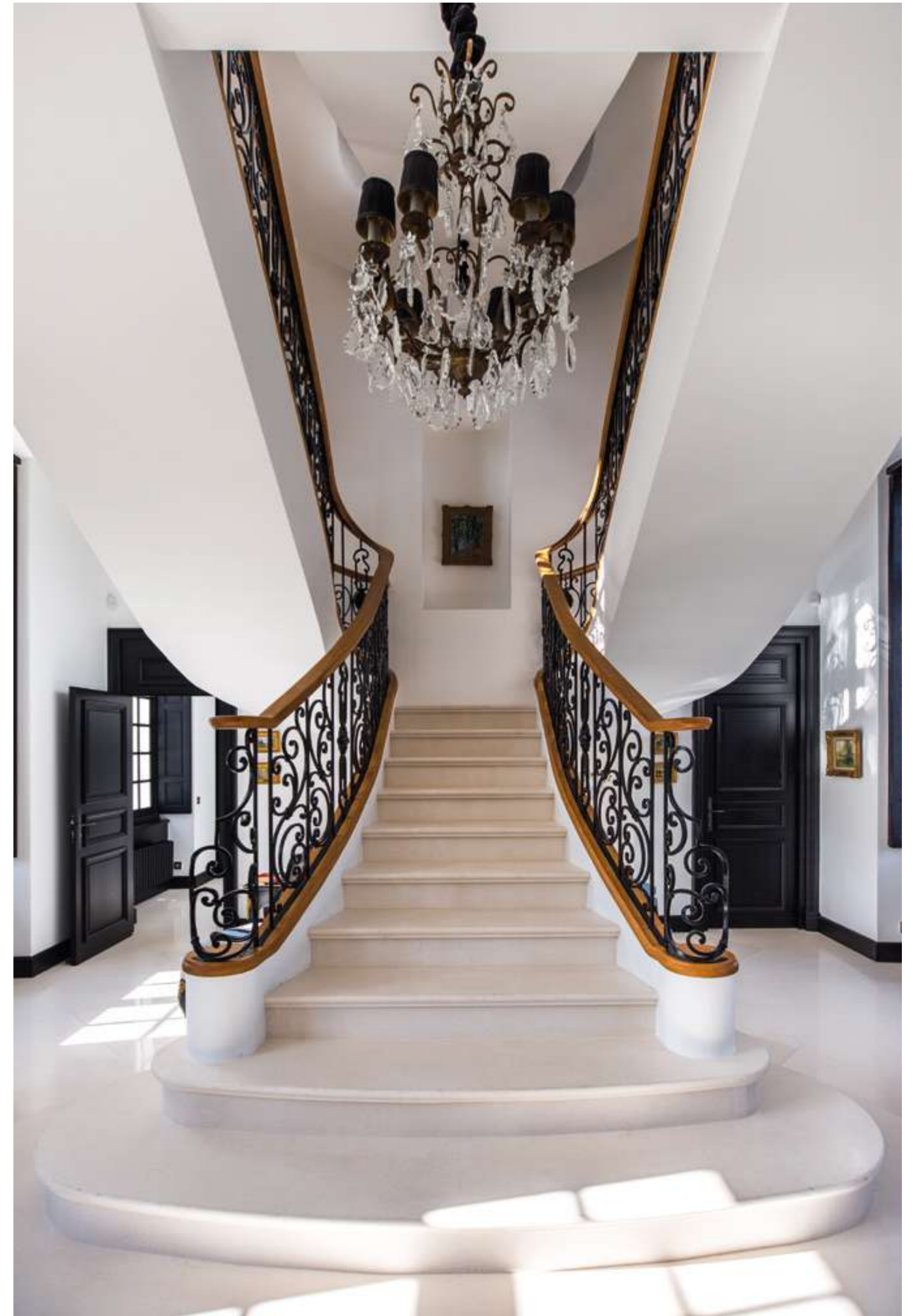
The 200-acre estate offers ancient forests, manicured lawns, secluded picnic areas and peaceful walks. Beauty truly is in the eye of the beholder as you gaze out towards the expansive grounds featuring impeccable gardens, specimen trees and tranquil lakes, providing an unforgettable experience.



AN ARTISTIC AMBIENCE.

While the gardens may be impeccable and the golf course championship standard, true relaxation lies within the seven beautiful guest suites taking their inspiration from French artists in pursuit of the perfect ambience.

Paying homage to their heritage through décor, relax among the masters and feel inspired by unique surroundings. French-designed fabrics are carefully sourced and handpicked for complete comfort.



CHÂTEAU LIVING.

From the crystal chandeliers to the finest details, each aspect of every room exists only to enhance the time enjoyed within the suites.





THE LITTLE THINGS.

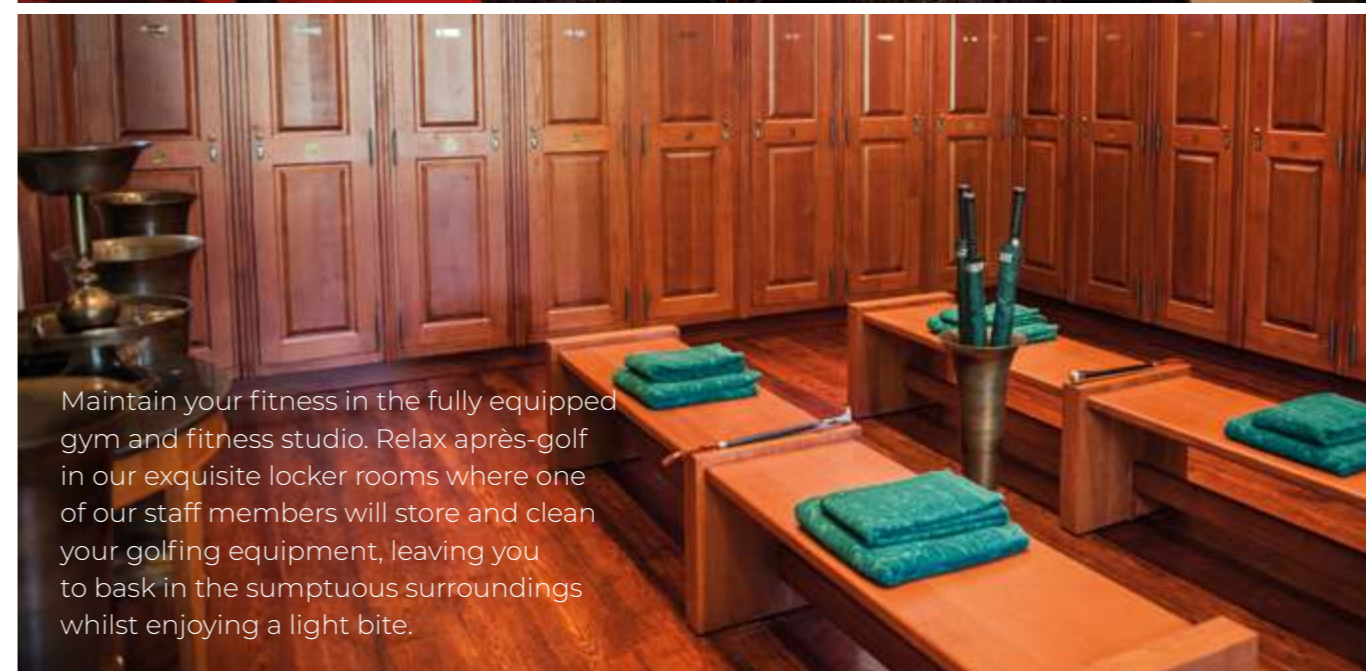
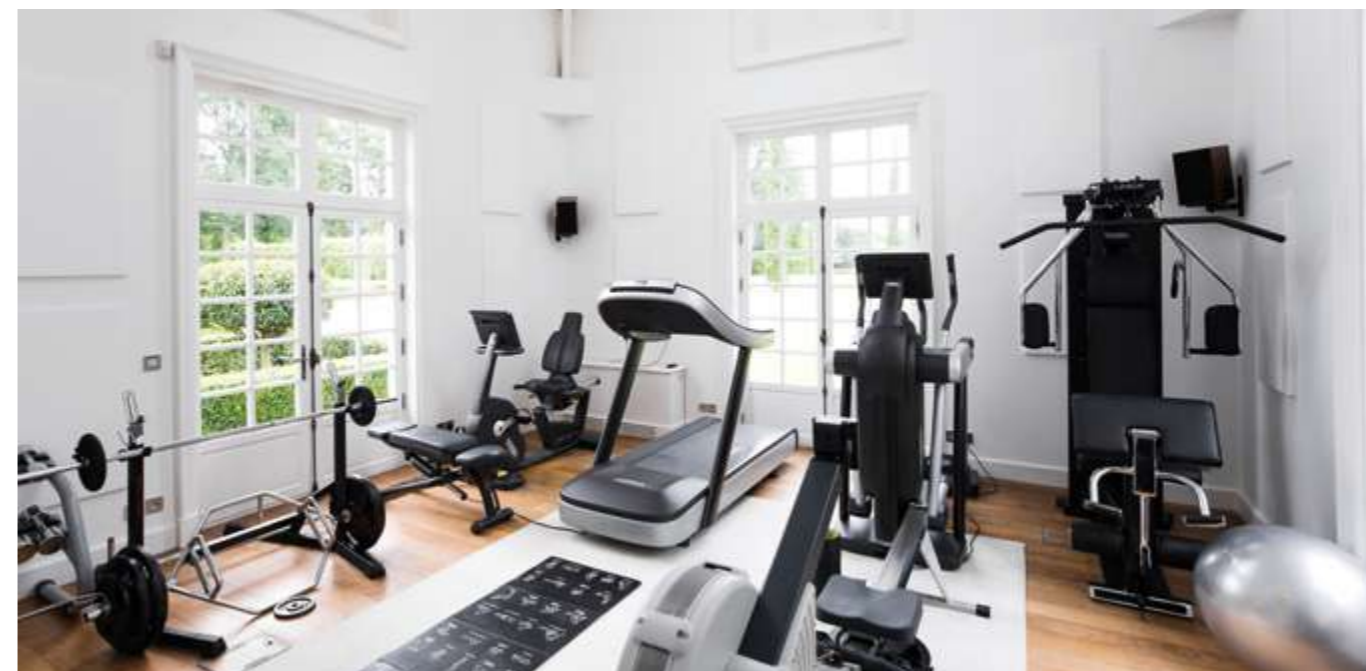
Discover true pleasure through the attention to detail and excellence in the smallest of touches throughout the Château.





RELAX & UNWIND.

The Château is ready to fulfil any role you desire; the staff, amenities and services all create an atmosphere of true escape from day-to-day life. Alleviate stress with in-house massages and spa treatments or relax in the indoor pool.



Maintain your fitness in the fully equipped gym and fitness studio. Relax après-golf in our exquisite locker rooms where one of our staff members will store and clean your golfing equipment, leaving you to bask in the sumptuous surroundings whilst enjoying a light bite.

PRACTICE YOUR PUTT.

Golf needn't always mean a full round. The onsite putting green offers a more relaxed opportunity to hone your skills whilst relaxing amongst the Château as you sip on a cocktail or enjoy a spot of lunch.





WINE & CUISINE.

Pleasure for the palette is essential to any retreat and the Château is equipped to delight the most refined of tastes. Expert chefs combine their culinary skills to create bespoke menus which unite the arresting tastes of the region with hand-selected produce. In addition, the 250-year old cellar that is nestled beneath the ground floor houses a selection of exquisite wines. Take a seat in the intimate space or even dine there and follow a unique story across every glass.



DINE YOUR WAY.

Whether you choose to dine formally in the Château's magnificent banqueting rooms or gather under the stars in the Jardin du Lac, the exceptional chefs serve the finest cuisine perfected over years of experience in partnership with the region's premier producers.







CHÂTEAU DE LA CHESNAYE.

In addition to Château du Coudreceau, the sister property, Château de la Chesnaye can be used as an alternative guesthouse for larger groups. Château de la Chesnaye offers a unique experience, nurturing creativity through residential art workshops, providing a home for like-minded individuals seeking physical and artistic rejuvenation.





EXPLORE MORE OF FRANCE.

While the Château enjoys seclusion from unwanted interruption, it remains close enough to Paris (90 mins by road) to maintain accessible links with the best of the city. The knowledgeable 24-hour staff will gladly assist you in arranging personalised and discreet excursions to any amenity, nightlife, shopping, culinary or cultural destination you desire; chauffeured personally in your choice of vehicle. Relax into a world like no other that is, Château du Coudreceau...





Booking Enquiries:
enquiries@cduc.com

45470 Loury, France
www.cducestates.com